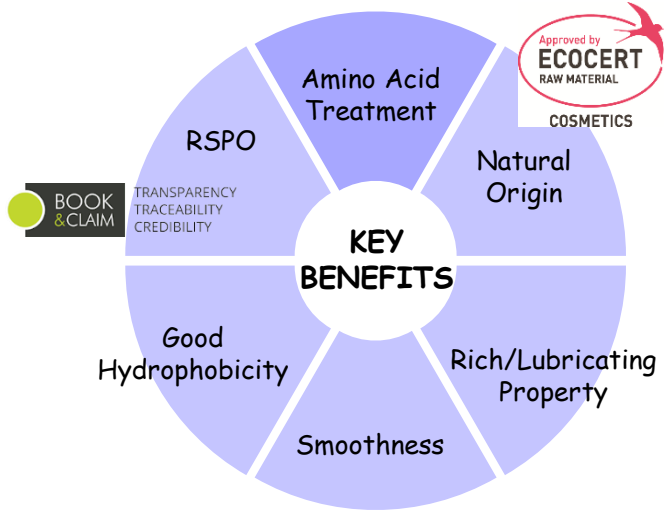
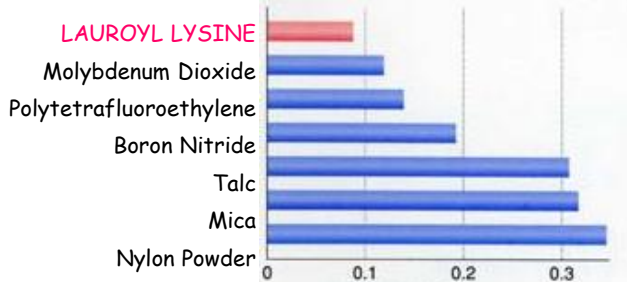


COMPOSITION	
INCI Name	Lauroyl Lysine

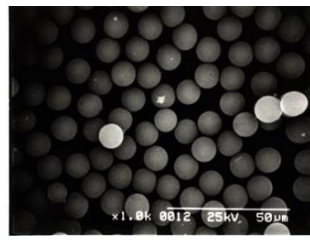


Friction Factor of Various Powder

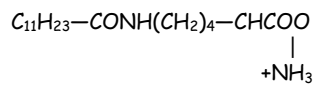


Ref. Brochure of Ajinomoto Co., Inc.

Uniform LL Treatment

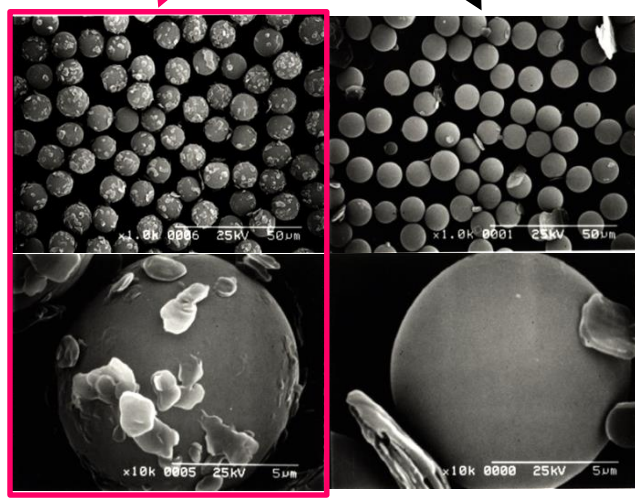


Chemical Structure of LL



DAITO's Technology (Water Slurry Reaction)

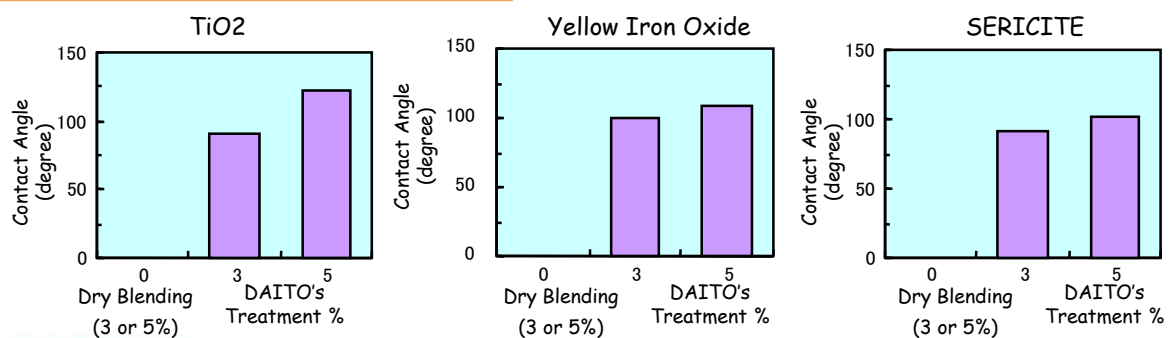
Conventional Method (Dry Blending)



Surface of spherical powder is coated by LL. In this water slurry system, LL crystals exist very uniformly. Crystal size of LL is controlled decately

We can not find LL on the surface of spherical powder. In this dry blending system, LL crystals does not exist uniformly. Crystal size is not controlled at all.

Water Repellency



Applications

Powder Foundation / Loose Powder

DP/039 Mineral Matte Loose Foundation
SPF16
DF/064 Bounce up Pact
DF/J087 Loose Setting Powder -Talc Free
DF/J089 Urban Protection Illuminating
2Way Powder Foundation



Eye Shadow / Blusher / Eye Brow

DF/J094 Creamy Water Proof Blusher
DE/J031 Long Lasting Eye Brow



Dome Shaped

DF/078 Dome Shaped Pressed Powder
DP/053 Dome Shaped Eye Shaadow



Safety and regulatory information

Material Safety Data Sheets are available for all DAITO KASEI products.

REACH: The ingredients, unless they are exempted, are registered or will be registered on May 2018.

For additional information Please contact:

MOTHER COMPANY
DAITO KASEI KOGYO Co., LTD
1-6-28 Akagawa, Asahiku, Osaka
JAPAN
☎ : 81 6 6922 1632
☎ : 81 6 6921 9562

DAITO KASEI EUROPE SAS
62 bd Henri Navier - Taverparc Bât 5.2
95150 Taverny
FRANCE
☎ : +33(0)1 30 40 01 01
☎ : +33(0)1 30 40 01 11
✉ : dkeurope@dkeurope.fr

The information presented within this sheet is offered in good faith, and is based on our present state of knowledge. It is offered for informational and evaluation purposes only. User of DAITO KASEI product should initiate their own testing to determine the suitability of this product for their intended purpose. DAITO KASEI assumes no liability or responsibility for any damage to person or property resulting from the use of this product or the incorporation of this product into any final formulation or product. Statements concerning the use of this product are not to be construed as a recommendation, suggestion or inducement to use the product in any way or within any formulation that is unlawful to create or sell, that violates any applicable regulations or that infringes upon any patent. No liability arising out of such a use is assumed.