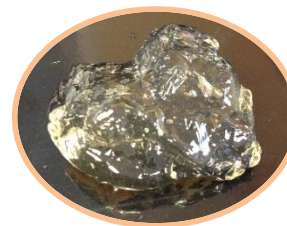
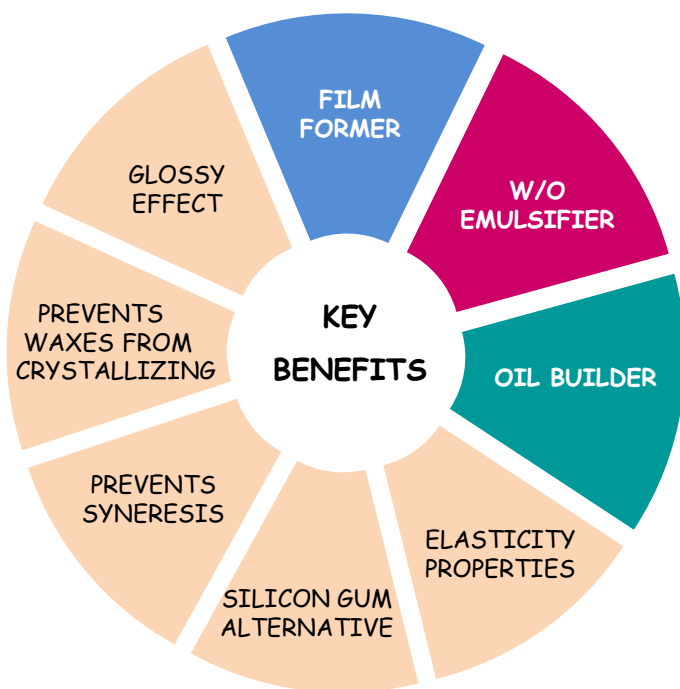


COMPOSITION
INCI Name
Methyl ricinoleate
Ethylcellulose



Chemical and physical properties

- Stable oil gel-like dispersion
- Thick, transparent, elastic oil gel from natural origin
- Characteristic odor
- Insoluble in water

Use guideline

- Predisperse MAKIGREEN GF at 50/50 in a polar oil such as castor oil and heat at 70°C. This premix is then compatible with non polar oil up to 10%.
- Can be heated up to 120°C
- Easy to handle and time saving as ethylcellulose is already dispersed
- Due to its unique elastic properties original textures can be achieved
- Suitable for cold process emulsion
- Use level: 0,1-35%

Formulation

- **Polar oils:** fully compatible
- **Non polar oils :** up to 10%
- **Films formers:** compatible with acrylics or natural polymers
- **Pigments:** compatible
- **Treated pigments:** compatible with all DAITO's treatments
- **Ethanol:** plasticizer effect on Makigreen GF

Gel clarity (50% MAKIGREEN GF)

Oil	Viscosity (Pa.s) (rotor M4, 6 rpm)	Gel appearance
Octyl dodecanol	73,3	Transparent
Phenyl trimethicone	68,5	Transparent
Dicaprylyl carbonate	41,5	Opaque
Isononyl isononanoate	37,7	Opaque
Tridecyl isononanoate	19,9	Opaque

Cosmetic benefits

- Yields to strong, transparent and flexible film
- Imparts incredible and long lasting brilliance
- Associated with acrylic film formers to provide long lasting and smooth silky feel

Applications

LIPGLOSS

DKE 122 Aqueous wet effect lipgloss

In combination with DAITOSOL 3000VP3

Provides absolute brightness

Imparts long lasting and a smooth silky non sticky feel

Gives a fresh sensation during application

DKE 169 Magic transparent lipgloss

DKE 242B Aqueous liquid lipstick



LIPSTICKS

DKE 126 Touch of gloss lipstick

Imparts an ultra glossy film

EMULSIONS

DKE 145B Natural W/O night cream

Shiny W/O emulsion easy to spread

Gives skin a subtle glow and natural looking



ANHYDROUS PRODUCTS

DKE 140 Smooth chamallow blush-OTS

DKE 156 Smooth chamallow perfume-OTS

DKE 232 Pink lady chamallow-OTS

Marshmallow-like consistency

Safety and regulatory information

Product safety: The safety of cellulose ethers and castor oil derived ingredients has been evaluated by the CIR Expert panel. They concluded that the ingredients are safe as cosmetic ingredients.

Material Safety Data Sheets are available for all DAITO KASEI products.

REACH registration: Ethyl cellyulose is exempted from registration and methyl ricinoleate has been preregistered and will be registered on May 2018.

The ingredients are listed on major chemical inventories such CTFA, CosIng, AICS, DSL, KCID, IECIC2003 and/or IECIC2014.

For additional information

Please contact:

DAITO KASEI EUROPE SAS
62 boulevard Henri Navier
Taverparc Bât 5.2
95150 Taverny - FRANCE

☎ : +33(0)1 30 40 01 01

☎ : +33(0)1 30 40 01 11

✉ : dkeurope@dkeurope.fr

HEAD OFFICE
DAITO KASEI KOGYO Co., LTD
1-6-28 Akagawa, Asahiku
Osaka - JAPAN

☎ : 81 6 6922 1632

☎ : 81 6 6921 9562

DAITO KASEI CHINA
6F/room 612
555 Wuding road Jing An District
Shanghai, CHINA 200040

☎ : +86 21 32 53 25 16

The information presented within this sheet is offered in good faith, and is based on our present state of knowledge. It is offered for informational and evaluation purposes only. Users of DAITO KASEI product should initiate their own testing to determine the suitability of this product for their intended purpose. DAITO KASEI assumes no liability or responsibility for any damage to person or property resulting from the use of this product or the incorporation of this product into any final formulation or product. Statements concerning the use of this product are not to be construed as a recommendation, suggestion or inducement to use the product in any way or within any formulation that is unlawful to create or sell, that violates any applicable regulations or that infringes upon any patent. No liability arising out of such a use is assumed.