

# CAMELLIA BLACK New!

**Black Powder derived from  
Camellia Sinensis (Thea Sinensis)**  
Camellia Sinensis (チャノキ) 由来 黑色粉体



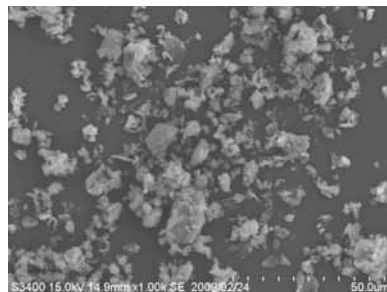
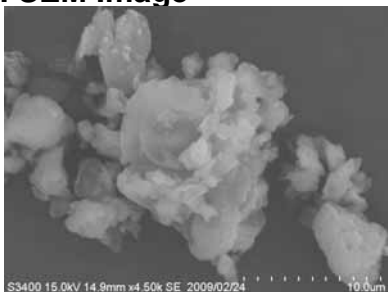
**From Natural Origin**

## 1. Appearance/外觀



10% in water/水中10%分散液

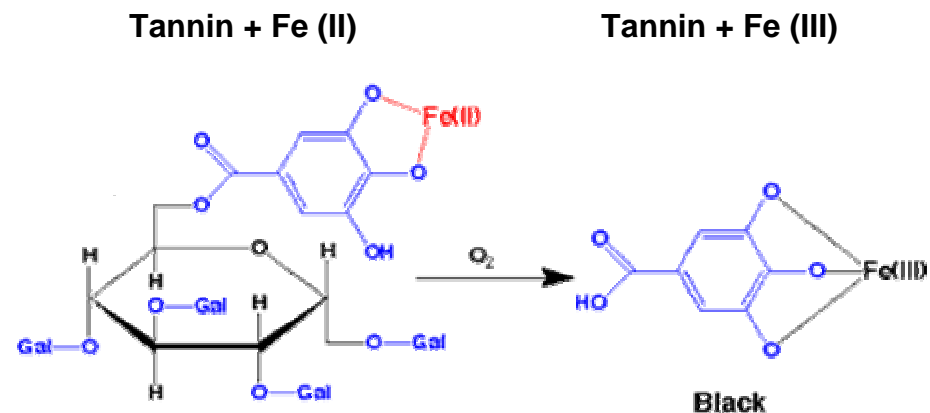
## 2. SEM Image



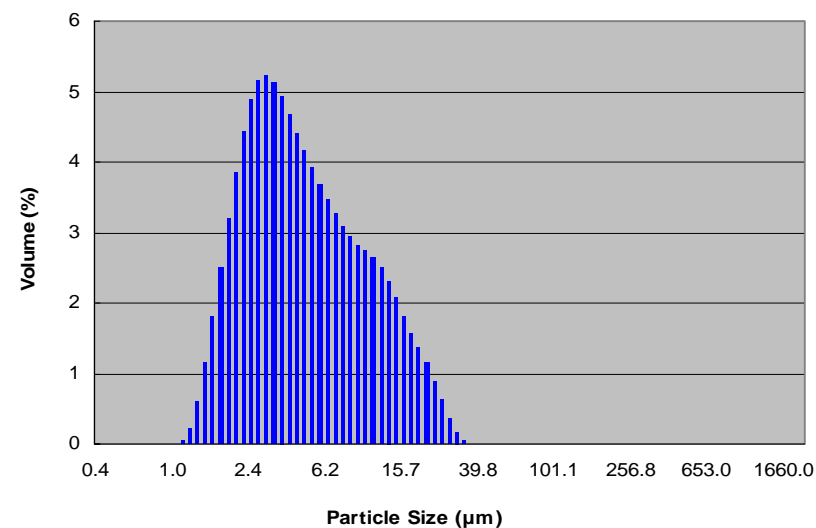
## 3. INCI Name/表示名称

INCI Name	表示名称	Content (%)
Camellia Sinensis Leaf Powder	チャ葉	99.5
Iron Hydroxide	水酸化第一鉄	0.5

## 4. Basic Technology/基本技術



## 5. Median diameter/平均粒径: 4.440 μm



No. DM-0021-CAMELLIA	Natural Black Mascara				
<PROPERTY>	<Phase>	<Ingredient>	<%>	<Trade Name>	<Supplier>
Water resistant	A	CARNAUBA	5.00		
	A	BEESWAX	8.00	BEESWAX S	CRODA
Curl	A	STEARIC ACID	2.00	LUNAC S-90V	Kao Chemicals
	A	GLYCERYL STEARATE SE	2.00	RHEODOL MS165V	Kao Chemicals
Flexibility	A	PROPYLENE GLYCOL STEARATE	2.00	HOMOTEX PS-200	Kao Chemicals
	A	OLEIC ACID	1.00		
Color: Black	A	POLYISOBUTENE	2.00	PARLEAM 18	NOF Cooperation
	A	CYCLOMETHICONE	4.00	KF995	Shin Etsu
	B	CAMELLIA BLACK	7.00		DAITO KASEI
	C	DE-IONIZED WATER	41.00		
	C	1,3-BUTYLENE GLYCOL	2.00		
	C	PVP	2.00	LUVISKOL K30	
	C	TRIETHANOLAMINE	1.70		
	C	PHENOXYETHANOL	0.20		
	C	METHYLPARABEN	0.10		
	D	DAITOSOL 4000SJT	20.00		DAITO KASEI
		TOTAL :	100.00		

No. DM-0022-RFCB	Natural Black Fiber Mascara				
<PROPERTY>	<Phase>	<Ingredient>	<%>	<Trade Name>	<Supplier>
Water resistant	A	(MASCARA BASE) CARNAUBA	5.00		
	A	BEESWAX	8.00	BEESWAX S	CRODA
Curl	A	STEARIC ACID	2.00	LUNAC S-90V	Kao Chemicals
	A	GLYCERYL STEARATE SE	2.00	RHEODOL MS165V	Kao Chemicals
Flexibility	A	PROPYLENE GLYCOL STEARATE	2.00	HOMOTEX PS-200	Kao Chemicals
	A	OLEIC ACID	1.00		
Color: Black	A	POLYISOBUTENE	2.00	PARLEAM 18	NOF Cooperation
	A	CYCLOMETHICONE	4.00	KF995	Shin Etsu
Long Lash	B	CAMELLIA BLACK	7.00		DAITO KASEI
	C	DE-IONIZED WATER	41.00		
	C	1,3-BUTYLENE GLYCOL	2.00		
	C	PVP	2.00	LUVISKOL K30	
	C	TRIETHANOLAMINE	1.70		
	C	PHENOXYETHANOL	0.20		
	C	METHYLPARABEN	0.10		
	D	DAITOSOL 4000SJT	20.00		DAITO KASEI
		TOTAL :	100.00		
		(FINAL COMPOUND) MASCARA BASE	97.00		
		RFCB-20D-3R	3.00		DAITO KASEI
		TOTAL :	100.00		