

CAMELLIA BLACK New!

*Black Powder derived from
Camellia Sinensis (Thea Sinensis)*

From Natural Origin

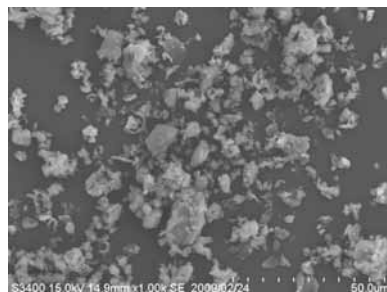
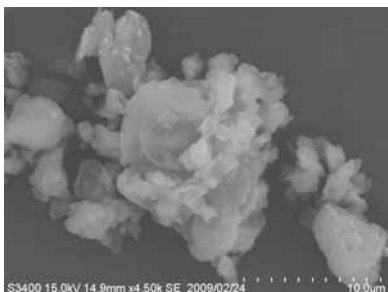


1. Appearance



10% in water

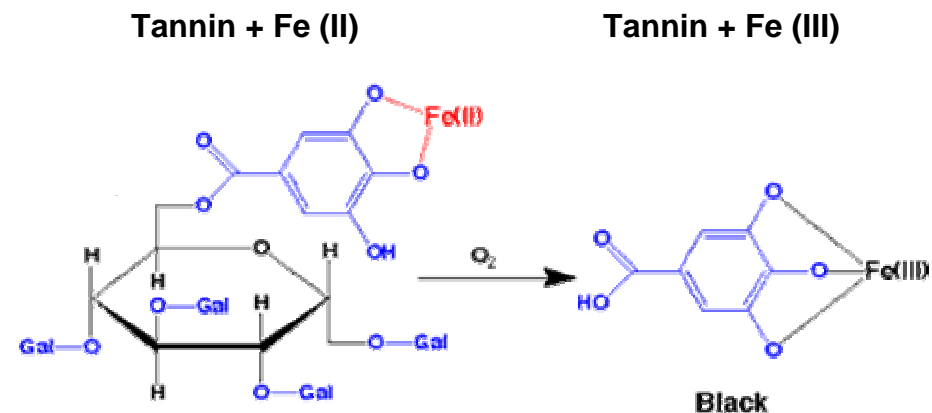
2. SEM Image



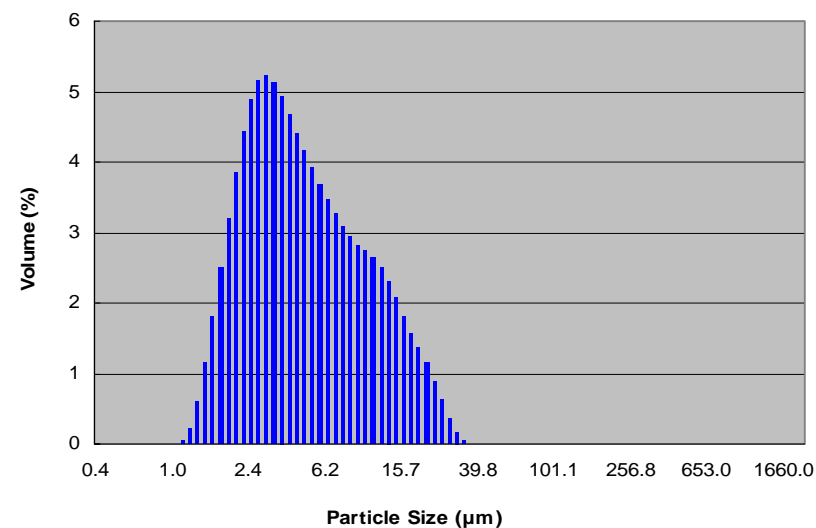
3. INCI Name

INCI Name	Content (%)
Camellia Sinensis Leaf Powder	99.5
Iron Hydroxide	0.5

4. Basic Technology



5. Median diameter: 4.440 μ m



No. DM-0021-CAMELLIA	Natural Black Mascara				
<PROPERTY>	<Phase>	<Ingredient>	<%>	<Trade Name>	<Supplier>
Water resistant	A	CARNAUBA	5.00		
	A	BEESWAX	8.00	BEESWAX S	CRODA
Curl	A	STEARIC ACID	2.00	LUNAC S-90V	Kao Chemicals
	A	GLYCERYL STEARATE SE	2.00	RHEODOL MS165V	Kao Chemicals
Flexibility	A	PROPYLENE GLYCOL STEARATE	2.00	HOMOTEX PS-200	Kao Chemicals
	A	OLEIC ACID	1.00		
Color: Black	A	POLYISOBUTENE	2.00	PARLEAM 18	NOF Cooperation
	A	CYCLOMETHICONE	4.00	KF995	Shin Etsu
	B	CAMELLIA BLACK	7.00		DAITO KASEI
	C	DE-IONIZED WATER	41.00		
	C	1,3-BUTYLENE GLYCOL	2.00		
	C	PVP	2.00	LUVISKOL K30	
	C	TRIETHANOLAMINE	1.70		
	C	PHENOXYETHANOL	0.20		
	C	METHYLPARABEN	0.10		
	D	DAITOSOL 4000SJT	20.00		DAITO KASEI
		TOTAL :	100.00		

No. DM-0022-RFCB	Natural Black Fiber Mascara				
<PROPERTY>	<Phase>	<Ingredient>	<%>	<Trade Name>	<Supplier>
Water resistant	A	(MASCARA BASE) CARNAUBA	5.00		
	A	BEESWAX	8.00	BEESWAX S	CRODA
Curl	A	STEARIC ACID	2.00	LUNAC S-90V	Kao Chemicals
	A	GLYCERYL STEARATE SE	2.00	RHEODOL MS165V	Kao Chemicals
Flexibility	A	PROPYLENE GLYCOL STEARATE	2.00	HOMOTEX PS-200	Kao Chemicals
	A	OLEIC ACID	1.00		
Color: Black	A	POLYISOBUTENE	2.00	PARLEAM 18	NOF Cooperation
	A	CYCLOMETHICONE	4.00	KF995	Shin Etsu
Long Lash	B	CAMELLIA BLACK	7.00		DAITO KASEI
	C	DE-IONIZED WATER	41.00		
	C	1,3-BUTYLENE GLYCOL	2.00		
	C	PVP	2.00	LUVISKOL K30	
	C	TRIETHANOLAMINE	1.70		
	C	PHENOXYETHANOL	0.20		
	C	METHYLPARABEN	0.10		
	D	DAITOSOL 4000SJT	20.00		DAITO KASEI
		TOTAL :	100.00		
		(FINAL COMPOUND) MASCARA BASE	97.00		
		RFCB-20D-3R	3.00		DAITO KASEI
		TOTAL :	100.00		