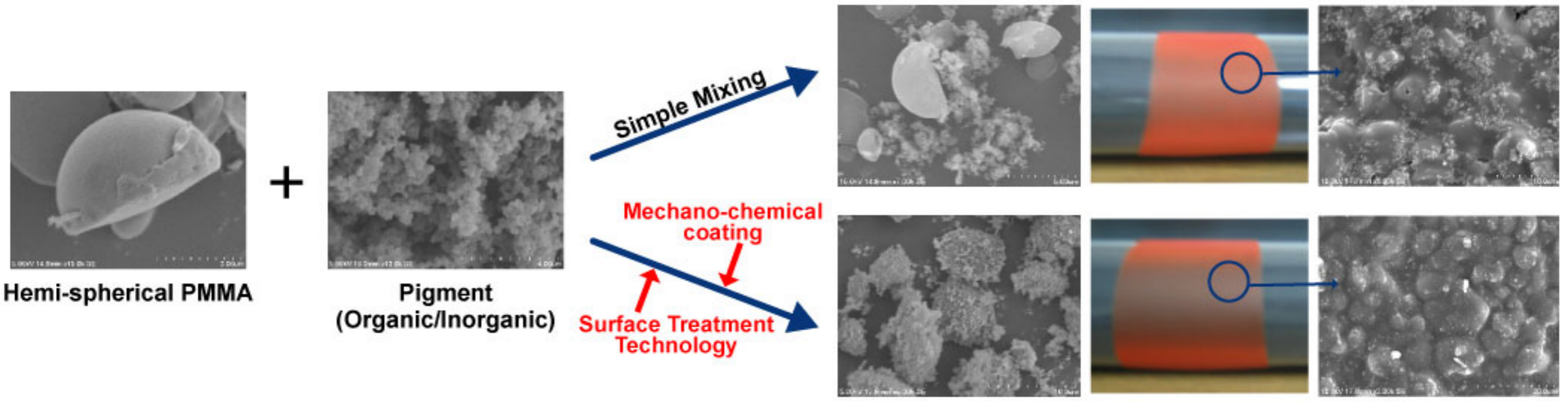
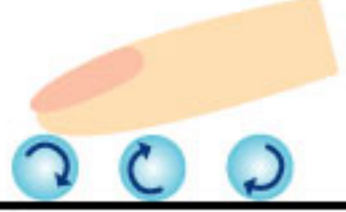
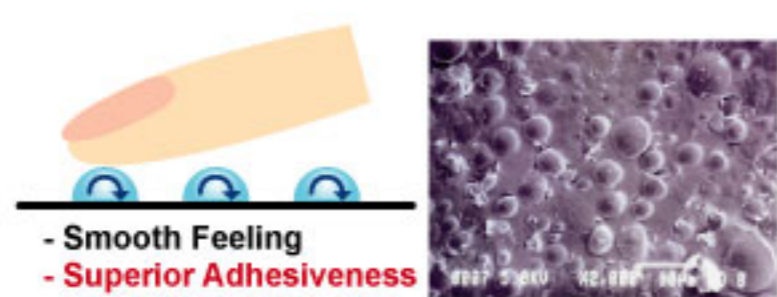


3D-TECH PW -Color Coated Hemi-spherical PMMA Powder-





The Unique Property of Hemi-spherical PMMA

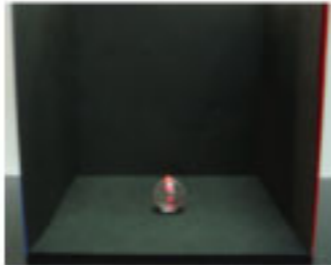
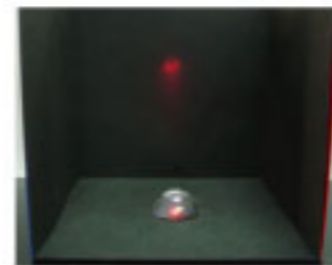

1. Feeling

| | |
|---|--|
| <div data-bbox="144 1202 432 1255" data-label="Text"> <p>Spherical</p> </div>  <ul style="list-style-type: none"> - Smooth Feeling - Superior extendability | <div data-bbox="793 1202 1081 1255" data-label="Text"> <p>Hemi-spherical</p> </div>  <ul style="list-style-type: none"> - Smooth Feeling - Superior Adhesiveness - Possible to formulate at high concentration |
|---|--|


2. Adhesion

| | | |
|--|---|---|
| <div data-bbox="129 1713 288 1744" data-label="Text"> <p>Spherical</p> </div>  <p>0.01g</p> | <div data-bbox="317 1713 533 1744" data-label="Text"> <p>Hemi-spherical</p> </div>  <p>0.03g</p> | <p>Method: Apply sample on the skin(5 × 8cm) using puff, and measure the quantity attached.</p> |
|--|---|---|


3. Optical Property

| | |
|--|---|
| <div data-bbox="1413 1202 1687 1255" data-label="Text"> <p>Spherical</p> </div>  | <div data-bbox="1802 1202 2076 1255" data-label="Text"> <p>Hemi-spherical</p> </div>  |
| <p>Apply Red laser light from 45° angle.</p> | |
|  <p>Model Experiments colored from 45° angle.</p> | |

Cosmetic Application



BLANK



+ 5% 3D-TECH PW

The edge of the lip is more enhanced and gives volume up effect.

| 3D Lip gloss Ingredients | Product Name | 3D-TECH PW | Blank |
|--|-----------------------------|-------------------------|------------------------------|
| | | Formula No. DLP-0003 | Formula No. DLP-0003BLANK |
| | | Composition (%) | |
| Ethyl Hexyl Hydroxystearate Triethylhexyl Trimellitate C30-45 Olefin | CLEARWAX | 10.00 | 10.00 |
| 3D-TECH PW (OTS LC3079-10) XP | - | 5.00 | - |
| OTS 5% treated D&C Red No.7 | OTS-5 UNIPURE RED LC3079 | - | 0.50 |
| 3D-TECH PW (PLAIN) XP | | - | 4.50 |
| Pearl pigment (20-150microns) | Sparkling Silver | 5.00 | 5.00 |
| Diisostearyl Malate | COSMOL 222 | 80.00 | 80.00 |
| Total | | 100.00 | 100.00 |

[REMARK]

We don't take any responsibility concerning to use of these formulations. These formulations are suggested as guidance.
The health and safety test has not been established by testing. Evaluation and testing are needed to the final formulation.